






11. General Storage

Spatial Planning

11.1 Footprint

Note: This general storage is separate to built-in-robos, kitchen and bathroom storage.

| <input checked="" type="checkbox"/> | Ref. | Provision | Reason | Value |
|-------------------------------------|--------|---|--|---|
| <input type="checkbox"/> | 11.1.1 | Approximately 2-4m ³ (appropriate to number of bedrooms) | Capacity to accommodate storage of ironing board, broom, vacuum cleaner and linen. |   |
| <input type="checkbox"/> | 11.1.2 | 1200mm x 900mm niche | Capacity to store spare equipment not in use [Assistive products] |    |

KEY



Social Inclusion



Affordability



Physical Independence



Amenity



Homelike

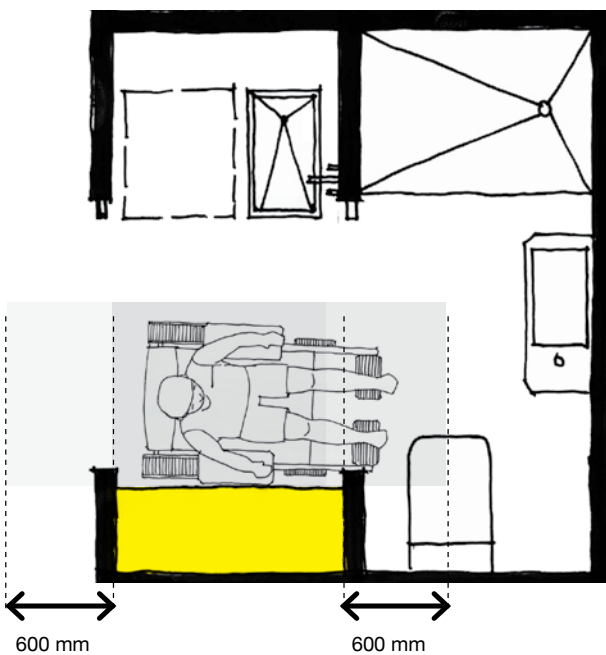
Value Colour Code: **Highly Desirable** | Desirable

11.2 Positioning Within Dwelling

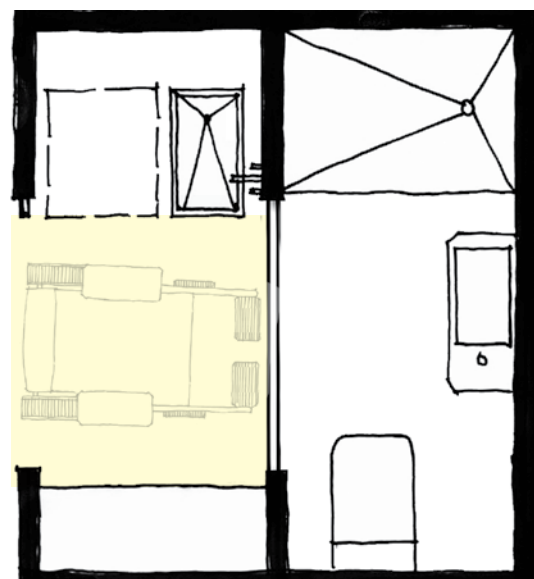
| <input checked="" type="checkbox"/> | Ref. | Provision | Reason | Value |
|-------------------------------------|--------|--|---|-------|
| <input type="checkbox"/> | 11.2.1 | Inbuilt linear storage abutting shared space | Maximises access to stored content (i.e. without needing to enter a separate storage room) | |
| <input type="checkbox"/> | 11.2.2 | Inbuilt storage offset 600mm from internal corners | Allows for a seated user to side access all parts of storage, using their left or right-hand side | |

[Multi-sided approach]

See also Part C: Construction and Detailing, Section 6: Inbuilt Storage/Joinery.



Inbuilt General Storage Provisions



Loose Storage Provisions ("Equipment Niche")