











## 8. Secondary Bedrooms

### Spatial Planning

#### 8.1 Footprint

<input checked="" type="checkbox"/>	Ref.	Provision	Reason	Value
<input type="checkbox"/>	8.1.1	6-15sqm (each bedroom)	Size range depends upon the use of bedrooms and total number of occupants	   
<input type="checkbox"/>	8.1.2	Square in shape	Supports flexible use of space to accommodate a range of functions	   

#### KEY



Social Inclusion



Affordability



Physical Independence



Amenity



Homelike

Value Colour Code: **Highly Desirable** | Desirable

## Brief Development

### Secondary Bedroom Size

Minimum provisions for secondary bedrooms vary, whether seeking LHA design certification alone, or SDA design certification (incorporating LHA certification).

LHA Design Guidelines do not specifically outline provisions for secondary bedrooms and the interpretation of an appropriate design response may depend on the assessment of an individual LHA assessor.

For dwellings where SDA certification is required, reference should be made to current SDA policy for advice on minimum requirements for second bedrooms.

## Brief Development

### Secondary Bedroom Configuration

Secondary bedrooms may be smaller or larger, dedicated or more flexible spaces.

The design will depend upon the number of occupants to be permanently housed within the dwelling.

Flexible spaces offer capacity to allow different living configurations, to suit a person at different life stages.

A variety of different approaches to the design of secondary bedrooms is provided below:



#### 1. Small Flexible Space Adjoining Living Areas

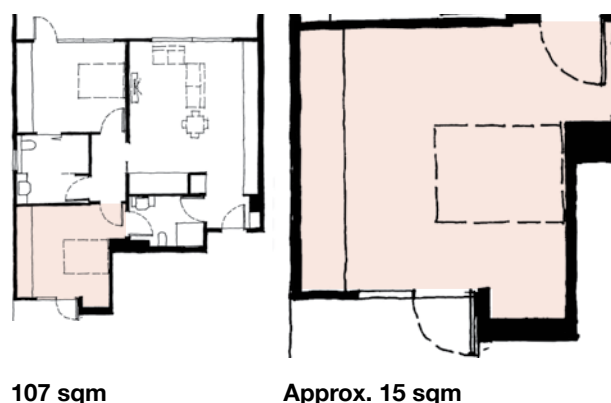
May be closed off if desired, to form a private study, exercise space, storage area or overnight stay for visiting family or friends. **[Physical experience]**

**[Assistive products]**

Approx. 6-10sqm

#### 2. Dedicated Standard Bedroom

Min. 3m x 3m area, clear of built-in robes



#### 3. Flexible Space Within Larger Living Areas

Larger part of the living area  
May be zoned off occasionally to allow overnight stay for friends or family when needed  
Approx. 6-10sqm

#### 4. Dedicated LHA Platinum Bedroom

Dedicated bedroom, with specifications as outlined in this guide  
Approx. 15sqm, including built-in robe

# Components

## 8.2 Television Zone

<input checked="" type="checkbox"/>	Ref.	Provision	Reason	Value
<input type="checkbox"/>	8.2.1	In dedicated bedrooms – provide as per main accessible bedroom	Supports shared living, by providing a second living area for privacy of a second occupant	

## 8.3 Built-in Robes – Spatial Planning

<input checked="" type="checkbox"/>	Ref.	Provision	Reason	Value
<input type="checkbox"/>	8.3.1	Min. 1200mm x 600mm built-in-robe	Supports mainstream expectations.	
<input type="checkbox"/>	8.3.2	Offset min. 600mm from internal corners	Supports access to contents, if approaching from either side. <b>[Multi-sided approach]</b>	

## 8.4 Built in Robes – Construction and Detailing

<input checked="" type="checkbox"/>	Ref.	Provision	Reason	Value
<input type="checkbox"/>	8.4.1	Sliding door panels	Prevents possible obstruction for a person using a wheelchair	
<input type="checkbox"/>	8.4.2	'Low-effort' panels	Aids independent use for person with reduced strength	

## 8.5 Built-in Desks (if provided)

<input checked="" type="checkbox"/>	Ref.	Provision	Reason	Value
<input type="checkbox"/>	8.5.1	800mm height AFFL, adjustable between 700-1000mm AFFL	Allows for customisation to suit changing user needs	